

SPECIFICATION

	KTS-442R6LC	KTS-442LLC
Measuring Range		
1P	5.0km	
3P	8-10 km	
Mini prism		
Non prism	600m	N/A
Digital Display	Maximum: 99999999.9999 Minimum: 0.1mm	
Accuracy	with prism 2mm+2ppm, without prism 3mm+2ppm	
Measuring Time	Tracking 0.1s, Fine 0.3s (optional)	
Atmospheric Correction	Automatic Correction by Inputting Parameter	
Prism Constant	Automatic Correction by Inputting Parameter	
Angle Measurement		
Measurement Method	Absolute Encoding	
Diameter of The Raster Disk	79mm	
Minimum Reading	1" / 5" Optional	
Accuracy	2"	5"
Detection Method	Horizontal: Dual	Vertical: Dual
Telescope		
Image	Erect	
Length	154mm	
Effective Aperture	45mm. (DTM: 50mm)	
Magnification	30 X	
Field of View	1° 30'	
Resolving Power	3"	
Minimum Focus	1m	
Compensation		
System	Dual axis liquid-electric	
Working Range	± 3'	
Resolving Power	1"	
Sensitivity of Vials		
Plate Vial	30" / 2mm	
Circular Vial	8' / 2mm	
Optical Plummet		
Image	Erect	
Magnification	3×	
Focusing Range	0.5m~∞	
Field of View	5°	
Data Storage & Communication		
Internal Memory	2M/24000 points	
External Memory	SD card (up to 32G)	
Communication Port	RS-232, mini USB	
Display		
Type	Dual sides, 6 lines	
Battery		
Power Supply	Rechargeable Ni-H battery (2700 mAH)	
Voltage	6 V DC	
Operation Time	10 hours	
Dimension & Weight		
Dimension	160mm×150mm×330mm	
Weight	5.8 kg	
Environmental Specification		
Dust/Water (IEC60529)	IP56	
Working Temperature Range	-20℃~50℃	
Humidity	95%, non-condensing	

STANDARD CONFIGURATION



- | | |
|-------------------------------|----|
| 1. Mainframe | 1x |
| 2. Rechargeable Battery | 2x |
| 3. Battery Charger & Adapter | 1x |
| 4. Communication Cable KE-203 | 1x |
| 5. SD Card | 1x |
| 6. Tools Kit | 1x |
| 7. Dryer | 1x |
| 8. Plummet | 1x |
| 9. Carrying Case | 1x |
| 10. Operation Manual | 1x |
| 11. Software CD | 1x |
| 12. Warranty Card | 1x |
| 13. QC Pass Certificate | 1x |
| 14. Rain Cover | 1x |
| 15. Belt for Case | 2x |

Battery and Charger



KB-20C



KC-20

EU/US/JP/UK/UL Type chargers available

COMPATIBLE ACCESSORIES (Optional)



Solar Filter
KF-20



Diagonal Eyepiece
KDE20



Best choice, Brightest price

KOLIDA

KTS-440 Series Reflectorless Total Stations

- 600m Reflectorless Range
- Fast and Powerful EDM
- Advanced Angle Accuracy
- Various Communication Interface
- Rugged and Waterproof Design



KOLIDA
KOLIDA INSTRUMENT

GUANGDONG KOLIDA INSTRUMENT CO., LTD.

Add: 2/F, Surveying & Mapping Building (He Tian Building), NO.24-26, Ke Yun Road, Guangzhou 510665, China
Tel: +86-20-85542075 Fax: +86-20-85542136
E-mail: export@kolidainstrument.com http://www.kolidainstrument.com

KTS-442R6LC Reflectorless Total Stations

KOLIDA's new 440 Series Total stations New Advanced Design with Improved Technology

The new KTS-440 series was designed to deliver the latest technology to surveyors worldwide, you will appreciate the technical improvement and advantages from the beginning of working with this equipment.

Featuring an ultra-powerful EDM, the KTS-442R6LC is able to measure up to 600m without reflector at an incredible 3mm+2ppm accuracy, and in prism mode it is able to measure up to 5,000m with single prism.

Measurements are captured faster than ever: 0.1 second in tracking mode and 0.3 second in find mode. The bright red laser dot pinpoints are also featured.

Improved Optics System

442R6LC is equipped with a newly-designed objective lens, now it has better tightness to resist adhesion failure, the water proof/ wind proof ability is also greatly increased.

The new receiving lens provides higher brightness in view field, a bigger signal-receiving area, increased the utilization rate of EDM signal. The measuring accuracy under sunshine/ foggy condition has been greatly improved.

A new coating technology was applied on Porro Prisms, now the laser (class II) became softer than before. It is safer for surveyors' eyes.



Ultra-Powerful, Advanced EDM

- 600m Non-prism range
- 5000m prism range
- 0.1-0.3 second measurement time
- Coaxial red laser pointer
- Improved performance under foggy condition



Various Communication Interface

- Up to 2GB SD card storage
- Mini USB port
- RS-232 Serial port
- Environmentally protected



Advanced Angle Encoder System

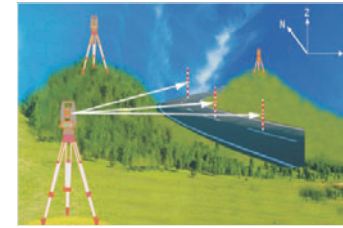
- 2" angle accuracy available
- Improved 4-ccd sensor design
- Self-calibration
- Proven high accuracy technology



Rugged, Waterproof Design

- Waterproof/ dust proof IP56 protection level
- Atmosphere/ Temperature sensor
- Stable angle accuracy
- Alphanumeric keyboard with backlight

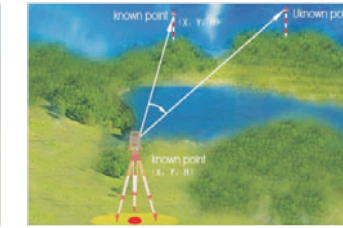
Abundant Add-in Program



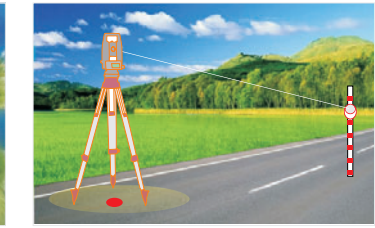
3-D coordinate measurement



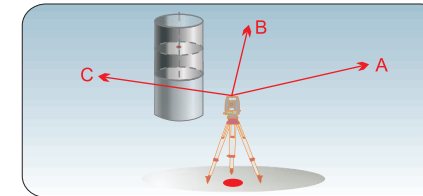
Remote Elevation



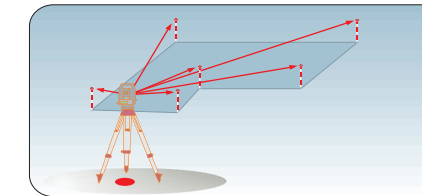
Setout



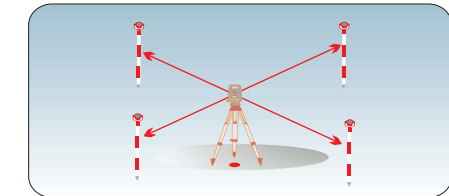
Road design



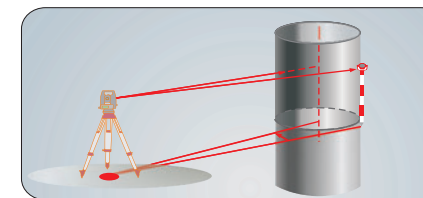
Missing Line



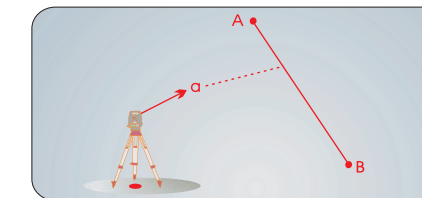
Area Calculation



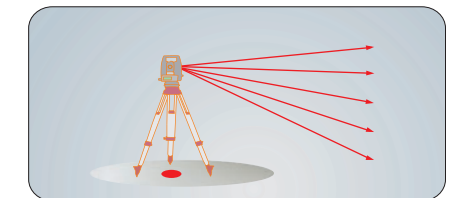
Resection



Offset measurement



Point to Line (base line)



Point Projection

3rd Party Software Supported (need extra Data Collector)



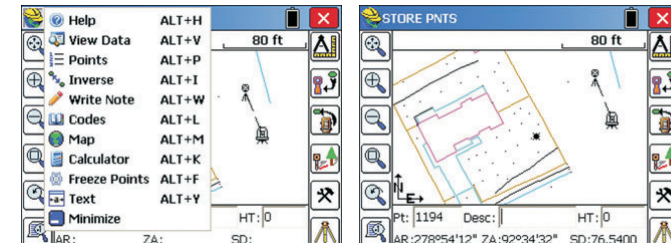
Users can freely setup KOLIDA Total Station in Field Genius menu by taking full advantage of it.

Powerful display helps to complete the project fast using mobile controller.

MicroSurvey Field Genius has abundant Total Station COGO program and survey mode. The display screen is designed for intuition and standard customized icon is easy to get access to connection and edit.



SurvCE can collect KOLIDA Total Station measurement graphically shown on SurvCE map. A rectangle can be finished by three points using computed rectangle command. Powerful desktop software allow users to code the coding styles defined by themselves just like Field Genius. Freely switch from GNSS mode to TS connection mode.



Comparison of KTS Series Total Stations

	442LLC	442R6LC	462R10L	472R10LC
Laser Type	Infrared Laser	Visible Laser		
Range	5,000m by 1 prism	600m non-prism 5000m by 1 prism	1000m non-prism 5000m by 1 prism	
Laser Pointer	N/A	Yes		
Operation System	DOS		Windows CE 6.0	
Built-in Memory	2MB (24000 points)	4MB (48000 points)	128MB DDR 512MB NandFlash	
SD Card	Up to 32GB			
Atmosphere/ Temperature Correction	Manual	Automatic		
Bluetooth	N/A	Optional		
Battery	2700mAH	3100mAH		